

Our company reserves the right to change technical characteristics without further notice.

**LETICH**  
print solutions

626 454 0540  
le@letich.com

1433 Amro Way  
South El Monte, CA 91733

www.letich.com



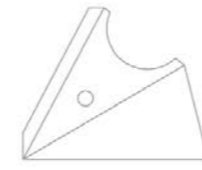
**LETICH**  
print solutions

## Postpress Waste Removal Machinery Supplier



## PROVIDER OF OPTIMAL SOLUTIONS FOR POST-PRINTING WASTE REMOVAL PROCESSES

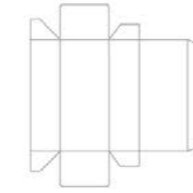
Letich is a manufacturer of paper waste cleaning machines. We provide solutions for removal of paper waste after die-cutting, effectively saving labor costs and improving production efficiency. Our machines are widely used in waste removal for cigarette packs, medicine packs, cosmetic boxes, hang tags, paper cups and other products.



TRIANGLE BOX



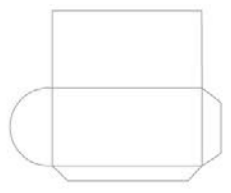
FOUR CORNER BOX



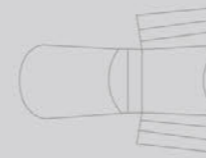
TRAPEZOID-SHAPED BOX



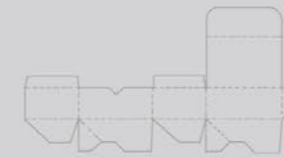
HEX BOX



RED ENVELOPE BOX



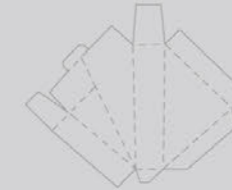
FRENCH FRIES BOX



EGG TART BOX

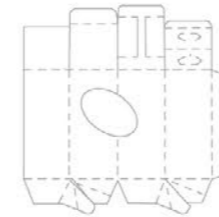


CHOCOLATE BOX

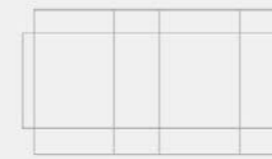


SANDWICH BOX

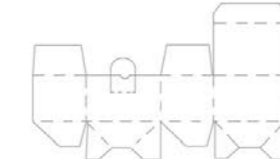
Waste Stripping Machine  
Applied Products



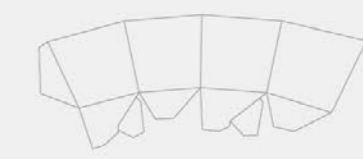
WINE BOX HOOK BOTTOM



CORRUGATED BOX



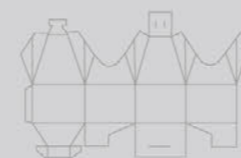
SELF-LOCK BOX



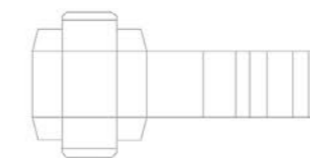
SECTOR SELF-LOCK BOTTOM BOX



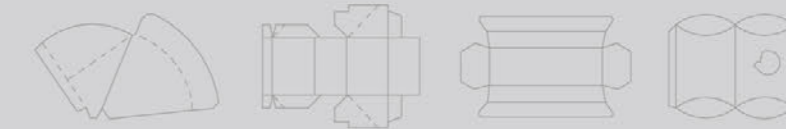
COSMETIC BOX



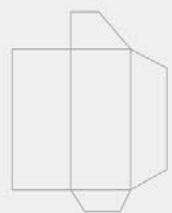
ALIEN-SHAPED WINE BOX



ALIEN-SHAPED BOX



VARIOUS SHAPED BOXES



TOOTHPICK HOLDER

WE STRIVE FOR PERFECTION



**10<sup>+</sup>**  
Patents

Qian Ding also continues to forge ahead on the road of innovation, constantly enhancing its own technical reserves, and has won many patents and domestic and international awards over the years.



# Industry Applications

COMMITTED TO IMPROVING THE INDUSTRY

Our machine widely applied for the industries as below:  
• Cigarette Box • Medicine Box • Cosmetic Box  
• Hang Tag • Paper Cup • Fast Food Box and so on.



Pharmaceutical Packaging



Hangtags



Paper Cup

Lunchbox

Cigarette Packaging



Cosmetic Case



In the future packaging field, we will create value and unlimited possibilities for customers based on excellent competitive products, innovative production solutions, and close partnerships.

# HTQF-680/920/1080

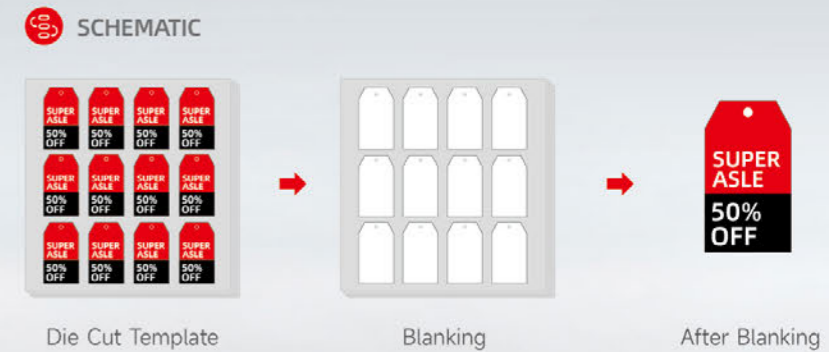
Stripping Machine(Basic Model)



**+**

**QIANDING<sup>®</sup>  
SOLUTION**

- Save a lot of manpower
- Improve product quality
- Increase business efficiency



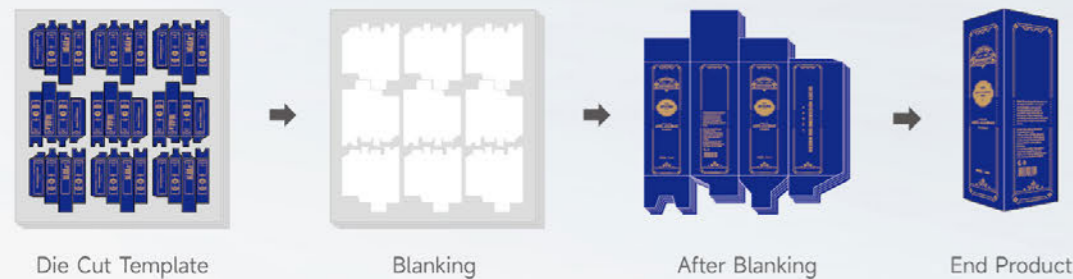
## MAIN FEATURES

This model is suitable for the paper scrap removal process after die cutting, such as hang tags, paper boxes, etc., which saves manpower, improves products quality to increase the efficiency of production.

## MAIN TECHNICAL PARAMETERS

Machine model	HTQF-680	HTQF-920	HTQF-1080
Max. paper size (X*Y)	680 X 480	920 X 680	1080 X 780
Min. paper size (X*Y)	400 X 300	550 X 400	650 X 450
Max. paper pile	100	100	100
Min. paper pile	40	40	40
Work bench	850	850	850
Max. blanking size	290 X 290	420 X 420	450 X 450
Min. blanking size	30 X 30	30 X 30	30 X 30
Blanking speed cycles/min	15-22	15-22	15-22
Max. working pressure	70	70	70
Air consumption L/min	4	4	4
Overall power	4.5 kw, 380V	4.5 kw, 380V	4.5 kw, 380V
Net weight	1500 kgs	1900 kgs	2300 kgs
Gross weight	1800 kgs	2200 kgs	2600 kgs
Machine net dimension	1910 X 1480 X 1940	2500 X 1800 X 1980	2960 X 2050 X 1950
Packaging size	2100 X 1500 X 2200	2600 X 1950 X 2200	3000 X 2200 X 2250

**SCHEMATIC**



# HTQF-680TR/920TR/1080TR

Stripping Machine + Rotary mould + Manipulator



**MAIN FEATURES**

This series is suitable for products such as hang tags, medicine packs, cigarette packs, cosmetics packs, and tea packs.

- The 180-degree rotation of upper mould makes blanking jobs easier for products in cross-arranged pattern.
- By use of manipulator, work has become easier, safer and labor-saving.

**MAIN TECHNICAL PARAMETERS**

Machine model	HTQF-680TR	HTQF-920TR	HTQF-1080TR
Max. paper size (X*Y)	680 X 480	920 X 680	1080 X 780
Min. paper size (X*Y)	400 X 300	550 X 400	650 X 450
Max. paper pile	100	100	100
Min. paper pile	40	40	40
Work bench	850	850	850
Max. blanking size	290 X 290	420 X 420	450 X 450
Min. blanking size	30 X 30	30 X 30	30 X 30
Blanking speed cycles/min	15-22	15-22	15-22
Max. working pressure	70	70	70
Air consumption L/min	4	4	4
Overall power	7 kw, 380V	7 kw, 380V	7 kw, 380V
Rotation route	0-180 °	0-180 °	0-180 °
Manipulator grip range	30-180	30-260	30-280
Manipulator grip load	50-1200	50-1500	50-1800
Net weight	1700	2200	2600
Gross weight	1900	2500	3100
Machine net dimension	2600 X 1400 X 1950	3100 X 1800 X 1950	3600 X 2050 X 1950
Packaging size	2100 X 1500 X 2200	2700 X 1950 X 2250	3100 X 2250 X 2250

# HTQF-920TRP/1080TRP

Stripping Machine +Rotary Mould +Manipulator +Palletizer



## QIANDING<sup>®</sup> SOLUTION

- More Relaxed
- More Safer
- Save More Time And Effort



### MAIN FEATURES

This series is suitable for medicine blanking jobs of medical box, cigarette box and cosmetics box.

- The 180-degree rotation of upper moulds makes blanking jobs easier for products in cross-arranged patterns.
- The manipulator helps to take the product, making your work easier and safer.
- Palletizer automatically collect after-blanking products and stack them on the pallets, which is time-saving and labor-saving.

### MAIN TECHNICAL PARAMETERS

Machine model	HTQF-920TRP	HTQF-1080TRP
Max. paper size (X*Y)	950 X 680	1080 X 780
Min. paper size (X*Y)	550 X 400	650 X 450
Max. paper pile	100	100
Min. paper pile	40	40
Work bench	850	850
Max. blanking size	420 X 420	450 X 450
Min. blanking size	30 X 30	30 X 30
Blanking speed cycles/min	15-22	15-22
Max. working pressure	70	70
Air consumption L/min	5	5
Overall power	9 kw/n, 380V	9 kw/n, 380V
Rotation route	0-180 °	0-180 °
Manipulator grip range	30-280	30-280
Manipulator grip load	50-1500	50-1800
Net weight	2200	2600
Gross weight	2500	3100
Machine net dimension	3100 X 1800 X 1950	3600 X 2050 X 1950
Machine overall dimension	2700 X 1950 X 2250	3100 X 2250 X 2250
Stack dimension	850 X 1000 X 1300	850 X 1000 X 1300
Running speed cycles/min	5-12	5-12
Net weight (palletizer)	1200	1200
Gross weight (palletizer)	1700	1700
Packaging size	2500 X 1800 X 1900	2500 X 1800 X 1900

# HTQF-1020E

Stripping machine/auto loader+ auto waste discharge/palletizer

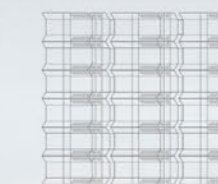


One-row blanking,  
multiple production

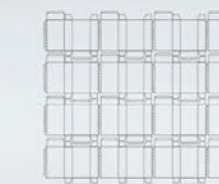
New version



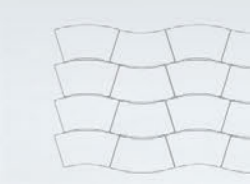
## KNIFE MAP



Cigarette Case



Medicine Box



Paper Cup

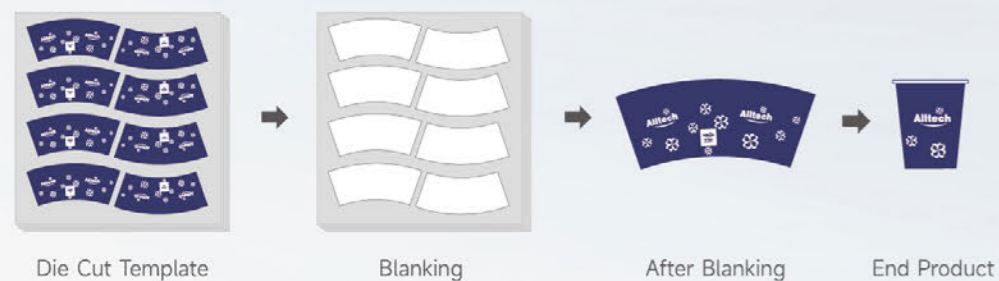
## MAIN TECHNICAL PARAMETERS

Machine model	HTQF-1020E
Max. paper size (X*Y)	1100 X 1100
Min. paper size (X*Y)	500 X 500
Max. paper pile	100
Min. paper pile	40
Work bench	800
Max. blanking size	300 X920
Min. blanking size	60 X 500
Blanking speed cycles/min	5-10
Air consumption L/min	7
Size of paper to be loaded	1100 X 820 X1300
Stacker dimension	1100 X 1100 X 1300
Overall power	11 kw/n, 380V
Net weight	7000
Machine net dimension	7600 X 1600 X 2100

## MAIN FEATURES

- This series is suitable for medicine packs, cigarette packs, cosmetic boxes, paper cups, paper bowls and other products.
- The industry's leading intelligent waste removal and product extraction technology provides solutions to increase efficiency and reduce burden.
  - The product realizes one output and multiple assembly, including four main functions: automatic paper loading, automatic waste removal and picking, automatic finished product stacking, and automatic waste output.
  - Minimize labor costs, reduce auxiliary time, and improve production efficiency.
  - Regard the die-cutting machine as the main front-end process and provide personalized customized services for various paper products and plastic packaging fields.

**SCHEMATIC**



# HTQF-1020D

Stripping Machine (One-row Blanking With Auto Waste Discharge)



**MAIN TECHNICAL PARAMETERS**

Model	HTQF-1020D
Max. paper size (X*Y)	1100 X 1000
Min. paper size (X*Y)	500 X 500
Max. paper pile	100
Min. paper pile	40
Work bench	800
Max. blanking size	300 X 920
Min. blanking size	60 X 500
Blanking speed cycles/min	5-10
Stacker dimension	1100 X 1100 X 1300
Air consumption L/min	7
Overall power	8.5 kw, 380V
Net weight	5500
Machine net dimension L*W*H	6200 X 1600 X 2100

**MAIN FEATURES**

- This series is suitable for medicine packs, cigarette packs, cosmetic boxes, paper cups, paper bowls and other products.
- The industry's leading intelligent waste removal and product extraction technology provides solutions to increase efficiency and reduce burden.
  - The product realizes one-output-multiple assembly, including three main functions: automatic waste removal and product picking, automatic finished product stacking, and automatic waste material output.
  - Minimize labor costs, reduce auxiliary time, and improve production efficiency.
  - Regard the die-cutting machine as the main front-end process and provide personalized customized services for various paper products and plastic packaging fields.

# HTQF-920B/1080B

Automatic Double Workbench Stripping Machine

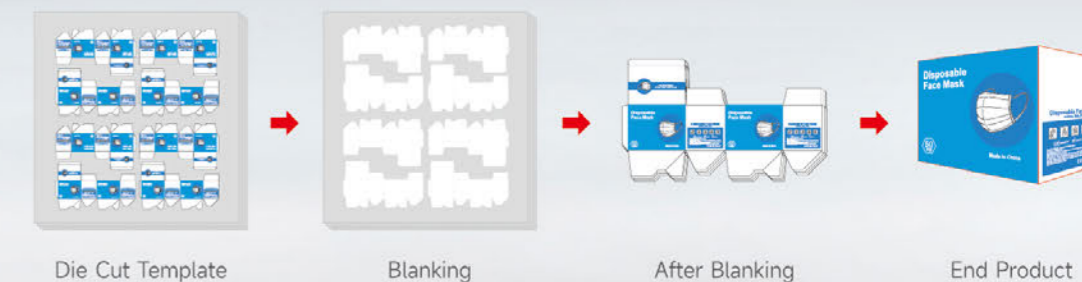
**+**

**QIANDING® SOLUTION**

- Save a lot of manpower
- Improve product quality
- Increase business efficiency



**SCHEMATIC**



**MAIN FEATURES**

This model is suitable for products such as hang tags, medicine packs, cigarette packs, cosmetics packs, and tea packs; especially practical for big-size products of complex shapes, such as lock bottom boxes, self-locking boxes.

**MAIN TECHNICAL PARAMETERS**

Machine Model	HTQF-920B	HTQF-1080B
Max. paper size (X*Y)	920 X 680	1080 X 780
Min. paper size (X*Y)	550 X 400	650 X 450
Max. paper pile	100	100
Min. paper pile	40	40
Work bench	850	850
Max. blanking size	420 X 420	450 X 450
Min. blanking size	30 X 30	30 X 30
Blanking speed cycles/min	15-22	15-22
Max. working pressure	70	70
Air consumption L/min	3	3
Overall power	5 kw/n, 380V	5 kw/n, 380V
Net weight	2900 kgs	3300 kgs
Gross weight	3100 kgs	3500 kgs
Machine net dimension	3600 X 1750 X 1950	3800 X 1850 X 1950
Packaging size	3800 X 1950 X 2250	4000 X 2200 X 2250

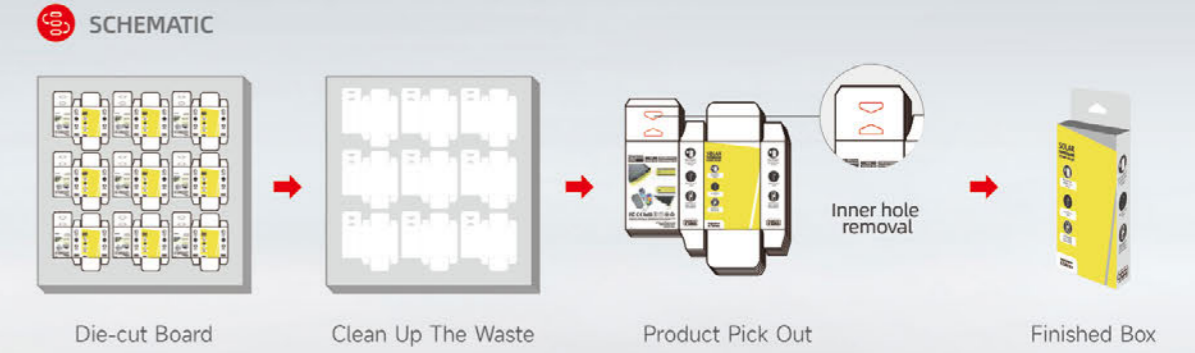
# HTQF-1080BR

Automatic Stripping Machine (Cleaning Inner Hole+ Stripping + Rotating )

**+**

**QIANDING®  
SOLUTION**

**15-22**  
Receiving speed



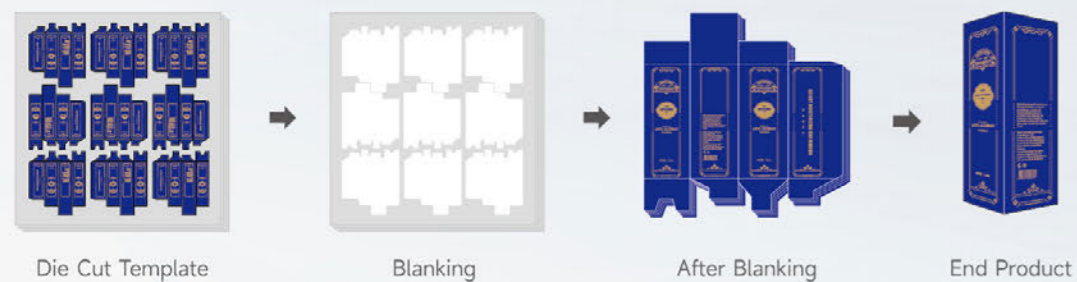
## MAIN FEATURES

This model is suitable for products such as hang tags, medicine packs, cigarette packs, cosmetics packs, and tea packs; especially practical for big-size products of complex shapes, such as lock bottom boxes, self-locking boxes.

## MAIN TECHNICAL PARAMETERS

Machine Model	HTQF-920BR	HTQF-1080BR
Machine Footprint Size	3500×1650×1950	3650×1750×1950
Max Sheet Size (X)×(Y) Mm	920×680	1080×780
Max Paper Pile Height	400×400	400×400
Min Paper Pile Height	40-100	40-100
Min Sheet Size (X)×(Y) Mm	850	850
Bench Height	420×420	450×450
Max Take Off The Paper	30×30	30×30
Max Force	15-22	15-22
Air Consumption L/min	4	4
Maximum Power	6	6
Net weight	2.9	3.2
Package Dimensions	3700×1800×2200	3800×1900×2200
Gross Weight	3.1	3.4

**SCHEMATIC**



# HTQF-1080BRRP

Intelligent Blanking Machine+Double Station +Double Manipulator+Palletizer

**MAIN FEATURES**

This series is suitable for products such as hang tags, medicine packs, cigarette packs, cosmetics packs, and tea packs.

- The 180-degree rotation of upper mould makes blanking jobs easier for products in cross-arranged pattern.
- By use of manipulator, work has become easier, safer and labor-saving.

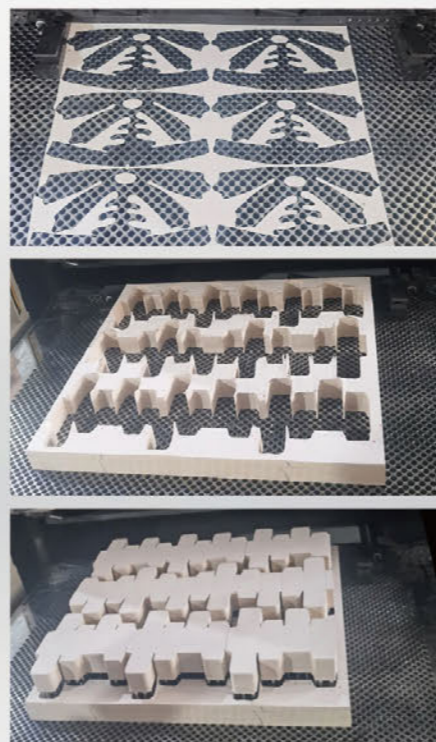
**MAIN TECHNICAL PARAMETERS**

Machine Model	HTQF-1080BRRP
Max. paper size (X*Y)	1080X780
Min. paper size (X*Y)	450X450
Max. paper pile	40-100
Work bench	850
Max. blanking size	450X450
Min. blanking size	30X30
Blanking speed cycles/min	15-22
Max. working pressure	70
Air consumption L/min	4
Overall power	10kw,380V
Manipulator grip range	30-300
Manipulator grip load	50-1800
Net weight	3200
Machine net dimension	5200X3050X2100
Stack dimension	850X1000X1300
Running speed cycles/min	5-12
Net weight (palletizer)	2000
Gross weight (palletizer)	2200

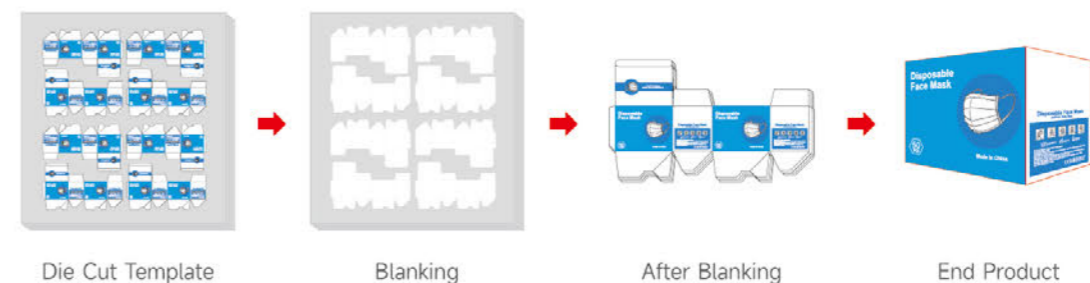


# HTQF-1080Q

Fully Intelligent Blanking Machine (one-time clearing function)



## SCHEMATIC



## MAIN FEATURES

This model is suitable for products such as hang tags, medicine packs, cigarette packs, cosmetics packs, and tea packs; especially practical for big-size products of complex shapes, such as lock bottom boxes, self-locking boxes.

## MAIN TECHNICAL PARAMETERS

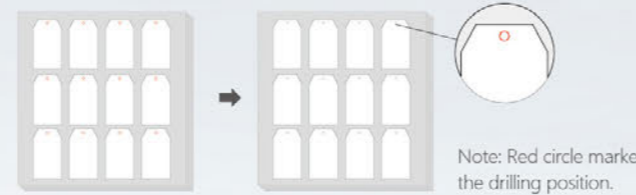
Machine Model	HTQF-1080Q
Max. paper size (X*Y)	1080 X 780
Min. paper size (X*Y)	300 X 300
Max. paper pile	60
Min. paper pile	25
Work bench	820
Max. blanking size	1050 × 720
Min. blanking size	50 X50
Blanking speed cycles/min	1-3
Max. working pressure	110 bar
Air consumption L/min	7 Ba
Overall power	8.5 kw
Net weight	4300 kg
Machine net dimension	1850 x 2060 x 2100
Packaging size	2000 x 2160 x 2200

# HTDK-720

Automatic High Speed Tag Hole Drilling Machine



## SCHEMATIC



## MAIN FEATURES

This model is used for drilling work of all kinds of hang tags, nameplates cards, cards.

- PLC intelligent operating system
- Drilling and then diecutting to improve accuracy
- Replace manual drilling machines

## MAIN TECHNICAL PARAMETERS

Machine Model	HTDK-720
Hole diameter	3-8
Hole depth	1-45
Spinning speed of drilling bit	DC motor speed adjusting
drilling method	Hallow bit drilling
Drilling bit mounting base	H type (straight)
Paper size	720 X 600
Workbench height	750
Drilling speed cycles/min	10-45
Overall power	2.2 kw, 380V
Net weight	550 kgs
Gross weight	3100 kgs
Machine net dimension	1250 X 1300 X 1500

# HTHE-1500

Automatic Hydraulic Lift



## MAIN FEATURES

- It has dual features of a common hydraulic forklift and automated lift; it can be moved in accordance to production need.
- It is equipped with a photoelectric tracking system to ensure that the stack rises to the set height after taking out the paper.
- It is equipped with a photoelectric tracking system to ensure that the stack rises to the set height after taking out the paper.
- It is an automated electric lift; a fully charged battery has the power for 24 hours averagely.

## MAIN TECHNICAL PARAMETERS

Machine Model	HTHE-1500
Battery voltage	12
Battery capacity	80
Power input	220-240
Power output	12
Machine net dimension	1500 X 540 X 700
Rated load	1500
Fork size	540 X 1150
Max. height of fork	800
Min. height of fork	85
Wheel material	PU
Cylinder	Double section cylinder