



**品质** 源于专业积累

From Professional Quality  
Accumulation

[www.hmtech.com](http://www.hmtech.com)



技术领先

TECHNOLOGY LEADERSHIP



HHM 海铨精工

质量保证

QUALITY GUARANTEE

竭诚服务

WHOLEHEARTEDLY SERVICE



FROM PROFESSIONAL QUALITY ACCUMULATION

## ABOUT US

### 关于我们

新乡市海铨精工机械有限公司专业致力于经济型智能化印刷包装设备，集设计研发、生产制造、销售服务于一身，始终将技术创新放在第一位，以质量求生存，以技术谋发展。从客户的实际需求出发，为客户提供定制化的印后加工设备，与客户共同发展，走技术化发展之路。

公司秉承着：诚信经营的一贯宗旨！知客户之所需，供客户之所求，急客户之所想！同样的产品我们的质量更优，同样的质量我们的价格更低，同样的价格我们的服务更好。

Xinxiang Haihua Precision Machinery Co., Ltd, including design and development, production and sales, concentrates on the development and production of economical and intelligent equipment for printing & packaging. Company always focuses on technical creativity, striving for survival on the basis of quality and development on the basis of technique. We offer customized post-printing equipment from the point of customer demand, develop together with customer and take the way of technical development.

Company adheres to: honesty! We try to know what the customer needs, offer what the customer requests and worry what the customer worries. For same product, our quality is better; with same quality, our price is better; with same price, our service is better.

# Box Model Base

## 盒型库

### A SERIES / 系列

 A1001	 A1004	 A1007	 A1008
 A1001	 A1004	 A1007	 A1008
 A10010	 A10011	 A10013	 A10015
 A10010	 A10011	 A10013	 A10015
 A10018	 A10019	 A10021	
 A10018	 A10019	 A10021	

## B SERIES / 系列



## C SERIES / 系列



## D SERIES / 系列





**E** SERIES / 系列

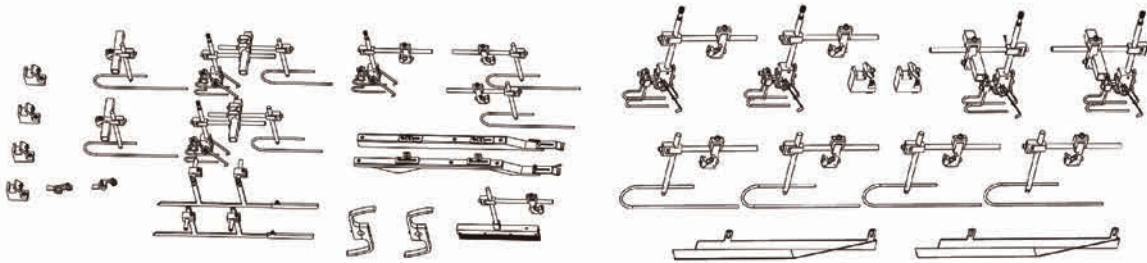


**F** SERIES / 系列



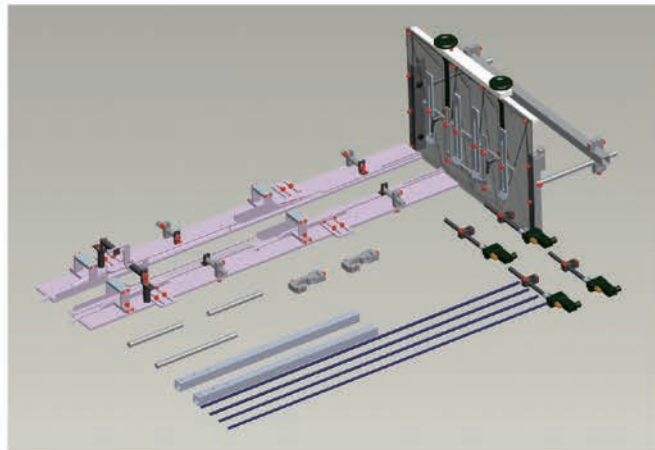
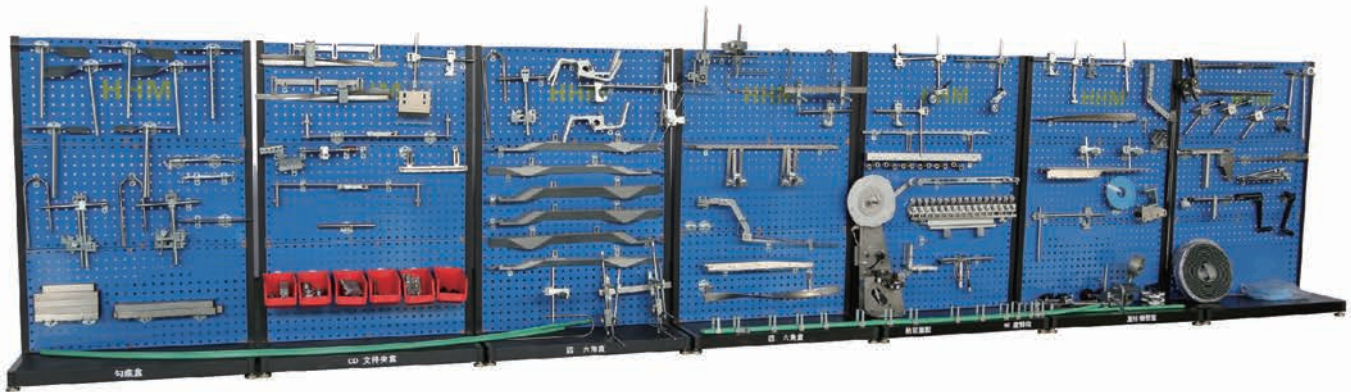
# Accessory Store

附件库



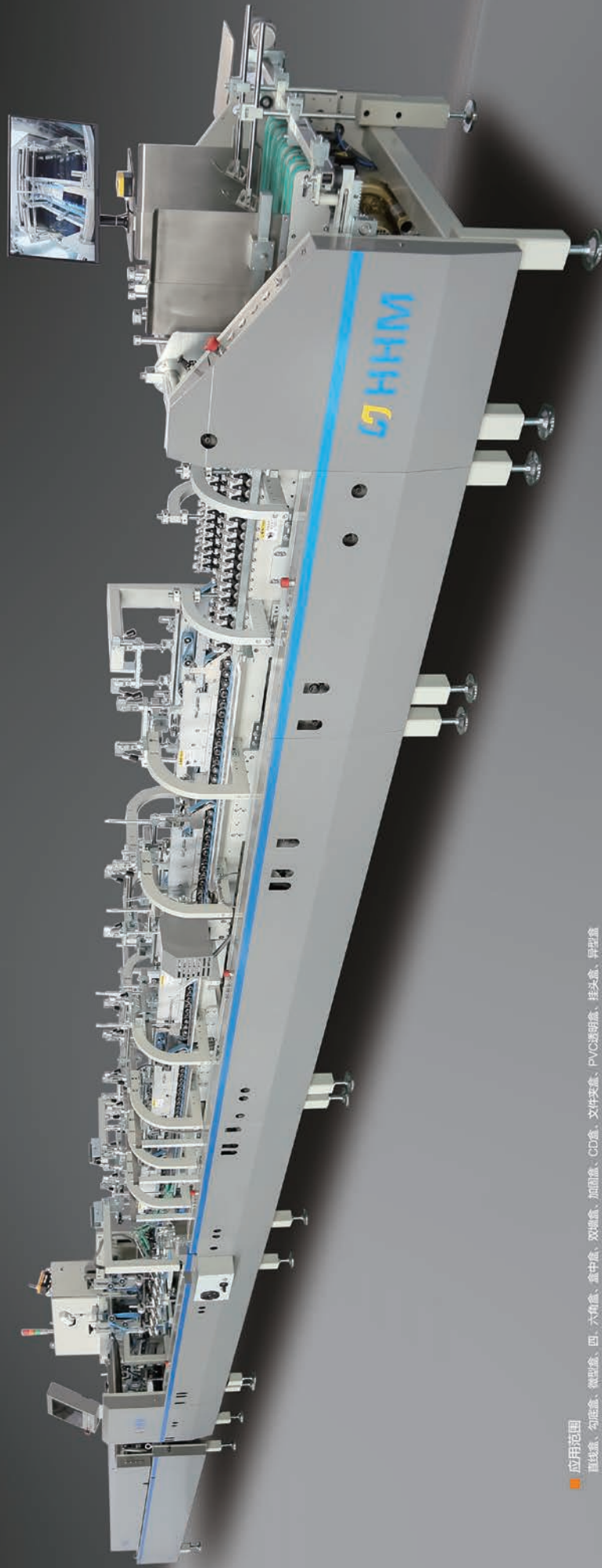
千余种盒型库及附件库技术支持

Thousands of box type library and Accessory Store technical support



# LILONG 60-80-110

丽龙系列全自动高速糊盒机



- **应用范围**  
直线条、勾花条、微型条、四、六角条、盒中条、双端条、加筋条、CD条、文件夹条、PVC透明条、挂头条、异型条
- **APPLICATION RANGE**  
Straight-line box, hook-bottom box, mini box, four, six corner box, inner box, double wall box, reinforced box, CD box, Folder box, PVC transparent box, hanging head box, special shaped box

### 飞达部 / Feeder

独立变频调速电机  
微型电子振动电机  
真空吸纸装置(选配)

Independent variable-frequency motor  
Micro-electronic vibration motor  
vacuum suction device(selection)



### 纠偏部 / Register

折叠前对纸盒进行准确的导正  
保证纸盒在进入折叠轨道前整齐如一  
根据纸盒进行左侧或右侧定位

Accurate guide for blanks before folding  
To position the box on the left or right side  
To promise the box aligned before folding



### 预折部 / Pre-folding Section

加长型结构设计  
第一压痕线预折180度  
第三压痕线预折135度

Lengthening design  
1st crease pre-folding at most 180°  
3rd crease pre-folding at most 135°



### 勾底部 / Lock-bottom

高速勾底装置  
A型勾底盒装置  
B型勾底盒装置

High speed lock-bottom device  
A type lock-bottom box device  
B type lock-bottom box device



### 反勾系统 / Back-folding

智能伺服电机技术  
电控挂勾系统  
微型E,F,N及各种卡纸均能准确折叠

Intelligent servo motor technology  
Electronic control hooking system  
Accurate folding of micro flute E,F,N carton  
and all kinds of cordbboards



### 封闭部 / Closing Section

高速折叠第二和第四压痕线  
外部皮带速度可调  
喇叭口纠偏装置  
气动升降中间皮带(选配)

folding 2nd and 4th crease in high speed  
Adjustable outer belt speed  
Bell-mouth correction device  
Pneumatic lifting middle belt(Optional)



### 输送部 / Transfer section

独立变频调速电机  
高速分打计数  
纸盒剔除装置(选配)

Independent variable-frequency motor  
High-speed counter  
Box ejector Device(selection)

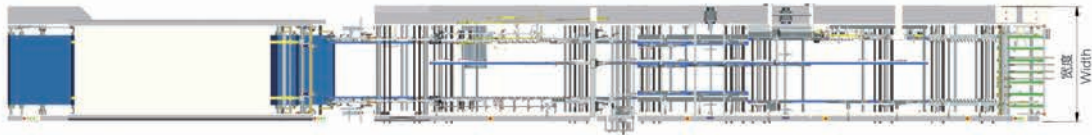


### 压力部 / Press section

气动压力调整  
独立变频调速电机  
纸盒间隙自动调整

Pneumatic Press Adjustment  
Independent variable-frequency motor  
Automatic adjustment of space between boxes





	Lilong60	Lilong80	Lilong110
加工材料 Material			
卡纸 Cardboards	200g-800g/m <sup>2</sup>	200g-800g/m <sup>2</sup>	200g-800g/m <sup>2</sup>
瓦楞纸板 Corrugated board	N、F、E	N、F、E	N、F、E
折叠后最大厚度 Max.folding thickness	12mm	12mm	12mm
点动速度 Inching Speed	30m/min	30m/min	30m/min
运行速度 Running Speed	20-400m/min	20-400m/min	20-400m/min
安装尺寸 Machine dimension	15500 × 1000 × 1300mm	15500 × 1300 × 1300mm	15500 × 1600 × 1300mm
压缩空气 Compressed air	6bar	6bar	6bar
功率 Power	15kw	17kw	22kw
总重量 Total weight	7T	8T	9T

	Lilong60	Lilong80	Lilong110	
	C Min.-Max.	86-600mm	86-800mm	86-1100mm
	E Min.-Max.	60-800mm	60-800mm	60-800mm
	L Min.-Max.	60-285mm	60-385mm	60-535mm
	C寸 Min.-Max.	146-600mm	146-800mm	146-1100mm
	E Min.-Max.	60-800mm	60-800mm	60-800mm
	L Min.-Max.	70-285mm	70-385mm	70-535mm
	C Min.-Max.	120-600mm	120-800mm	120-1100mm
	E Min.-Max.	130-800mm	130-800mm	130-800mm
	H Min.-Max.	25-150mm	25-150mm	25-150mm
	C Min.-Max.		250-800mm	250-1100mm
	E Min.-Max.		130-800mm	130-800mm
	H Min.-Max.		25-150mm	25-150mm

## Automatic High Speed Folder Gluer With Inscetion

### 全自动检品糊盒一体机

#### 应用范围

医药包装、烟草包装、化妆品包装、食品包装、酒类饮料包装等。

#### APPLICATION RANGE

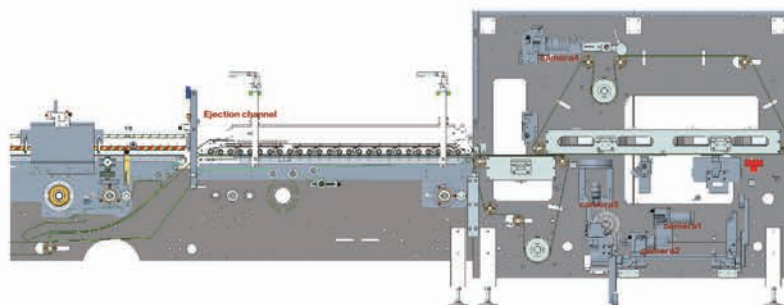
Pharmaceutical , tobacco , cosmetic , food , wine & beverage packaging etc.

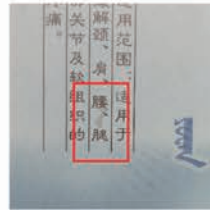
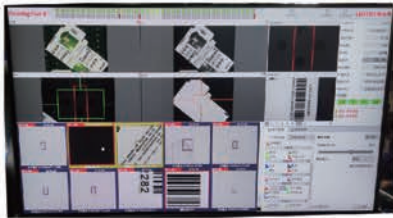


Lilong60-INSP

Lilong60-INSP

卡纸 Cardboards	200g-800g/m <sup>2</sup>	200g-800g/m <sup>2</sup>
最大走纸宽度 Max.Inspection width	650mm	800mm
最大检测幅面 Max.Inspection size	550mm x 550mm	700mm x 600mm
最小检测幅面 Min.Inspection size	100mm x 100mm	100mm x 100mm
检测速度 Inspection Speed	30-250m/min	30-250m/min
安装尺寸 Machine dimension	19870 × 1000 × 1300mm	19870 × 1300 × 1300mm
压缩空气 Compressed air	6bar	6bar
功率 Power	22kw	25kw
总重量 Total weight	8T	9T

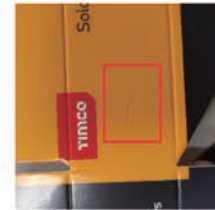




污渍  
Stains



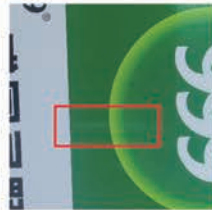
折痕  
Crease



划伤  
Scratch



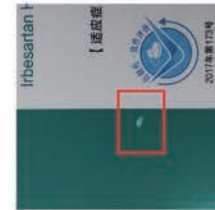
错误代码  
Wrong code



色差  
Color deviation



脏点  
Dirty spot



墨皮  
Ink cover

检测类型  
Inspection Types

常见缺陷(彩色7K相机):脏点, 套准错误, 色差, 漏印, 模切和套准, 褶皱, 异物等。  
Common defects (Color 7K camera): Dirty spot, Mis-registration, Color deviation, Missing print, Improper Die-cutting and registration, Deckle, Foreign objects etc.

3D缺陷 (黑白8K相机):起皱, 折痕, 烫印不当和漏烫, 压花, 上光缺失和套准, 气泡, 划伤, 涂层缺陷。  
3D defects (Mono 8K camera): Wrinkle, Crease, and miss stamping, Embossing, Varnish missing and registration, Bubbles, Scratch, Coating defects.

可变量数据缺陷:重复代码、错误代码、缺失代码、顺序错误、可读性、错误打印代码、破碎代码、扭曲代码行、缺失代码行。  
Variable data defects: Repeated code, Wrong code, Missing code, Sequence mistake, Readability, Misprint code, Broken code, Twisted code line, Missing code lines.

背面检测:脏点, 昆虫, 污渍, 条纹线, 异物等。  
Back Side inspection : Dirty spot, insects, stains, streak line, foreign objects etc.

检测精度  
Inspection Resolution

印刷缺陷(正面):0.11mm × 0.15mm  
Print defects (Front side): 0.11mm × 0.15mm

3D缺陷(正面):0.1mm × 0.1mm  
3D defects (Front side): 0.1mm × 0.1mm

可变量数据缺陷(单面扫描相机):0.05mm × 0.05mm  
Variable data defects (Mono Area-scan camera): 0.05mm × 0.05mm

背面缺陷:0.1mm × 0.1mm  
Back Side Defects: 0.1mm × 0.1mm

最小缺陷检测精度  
Min. Defect Accuracy

0.1mm<sup>2</sup>

套印检测精度  
Mis-Registration

0.15mm

色差检测精度  
Color Measurement

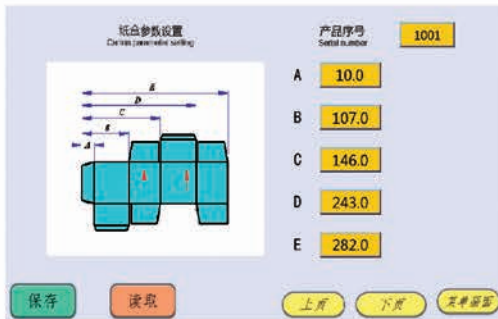
ΔE>3

# Automatic Adjustment Module

## 智能调机模块

每组托架都配备一套智能调节单元，配合海铨HT200型操作系统可以实现全自动调机，针对已经加工过的纸盒数据，系统可以自动保存所有加工参数，下次重复加工时可以一键调用所有加工数据，所有托架将会移动到指定位置。

We have an automatic drive unit for each carrier, it can be adjusted automatically with HaiHua HT200 operating system. The system can automatically save all processed product data for the next processing. When you need just put one key, all carrier will be automatically moved to the first position.



纸盒参数设置  
Carton parameter setting



智能控制系统  
Sero control system



飞达定位伺服电机  
Fedder positioning sero moter



托架移动伺服电机  
Carrier sero drive moter

	Lilong60	Lilong80	Lilong110
卡纸 Cardboards	200g-800g/m <sup>2</sup>	200g-800g/m <sup>2</sup>	200g-800g/m <sup>2</sup>
瓦楞纸板 Corrugated board	N、F、E	N、F、E	N、F、E
功率 Power	15kw	17kw	22kw

# Pyrena 1150-1450-1650

FOLDING CARTON GLUER  
高速全自动糊箱机



## 模切和模压后材料

纸板最高可达	800g/m <sup>2</sup>
E、F、N、B型瓦楞纸	
折叠后最大厚度	15mm

## CUT AND CREASED MATERIALS

Carton and board up to	800g/m <sup>2</sup>
E, F&N-flute and B corrugated board	
Max.thickness of a folded box	15mm

## 驱动系统

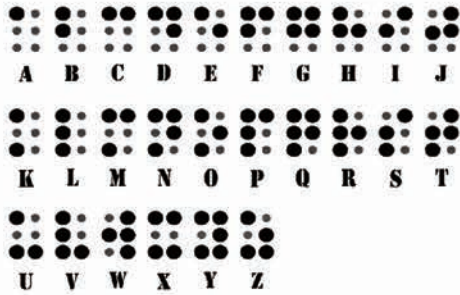
点动速度	25m/min
可变速度 (最高)	500m/min
总功率	25Kw
最大占地面积	2.50 × 18m

## DRIVE

Inching speed	25m/min
Variable running speed up to	500m/min
Total power required	25Kw
Max.floor space required	2.50 × 18m

# Braille Unit

## 盲文单元



控制方式: 伺服电机  
盲文版: 可更换  
最大盲文长度: 250mm  
纸张: 200-600g

Control mode: Servo moter  
Braille plate: Replaceable  
Max.Braille length: 250mm  
Cardpaper: 200-600g

# Auto Pack

## 自动收盒机

该机用于糊盒机后道辅助收纸设备，可以将糊盒机后部鱼鳞式的纸盒全部竖立，减轻工人的工作强度，提高生产效率，适用于大批量生产时高速糊盒工作。

可与各品牌的糊盒机联机使用

The device is auxiliary pack for folder gluer, erecting all the fishscale-like boxes in the latter part of folder gluer to reduce working strength and increase productivity. It applies to mass production with high speed folding and gluing.

It suits various brands of folder gluers.



项目	自动收盒机
纸张	纸板克重（卡纸）200-600g
纸盒类型	直线盒、带盖四角盒、六角盒
最小纸张尺寸	80x80mm
最大纸张尺寸	400x400mm
最大堆叠厚度	70mm
尺寸&安装	2600x1850x1000mm
总功率	1.2 KW

ITEM	AUTO PACK
Sheet	Carton and board between 200-600g
Box Type	Straight-line box, 4-corner box with cover, 6-corner box
Min. Sheet Size	80x80mm
Max. Sheet Size	400x400mm
Max. Stacking Thickness	70mm
Dimension & Installation	2600x1850x1000mm
Total Power	1.2 KW

# Liquid Film

## 液化膜

液化膜对印刷品/材料表面的液态涂料透过专有的加工方式将在印刷品或材料表面转化成带有薄膜特性的透明层。提供全面保护,局部吸睛。低成本,高效率,可回收。

Liquid film transforms the liquid coating on the surface of printed materials into a transparent layer with thin film characteristics through a proprietary additive method. Provide comprehensive protection and local absorption of sunlight. Low cost, high efficiency, recyclable.



No lamination  
Recyclable



No  
Cracks



Added  
Value



Glass-Like  
Gloss



Scratch-Resistant  
Matte



Multiple  
Holographic



去塑  
No lamination



逆向上光  
Pro-Cure



全息  
Holographic



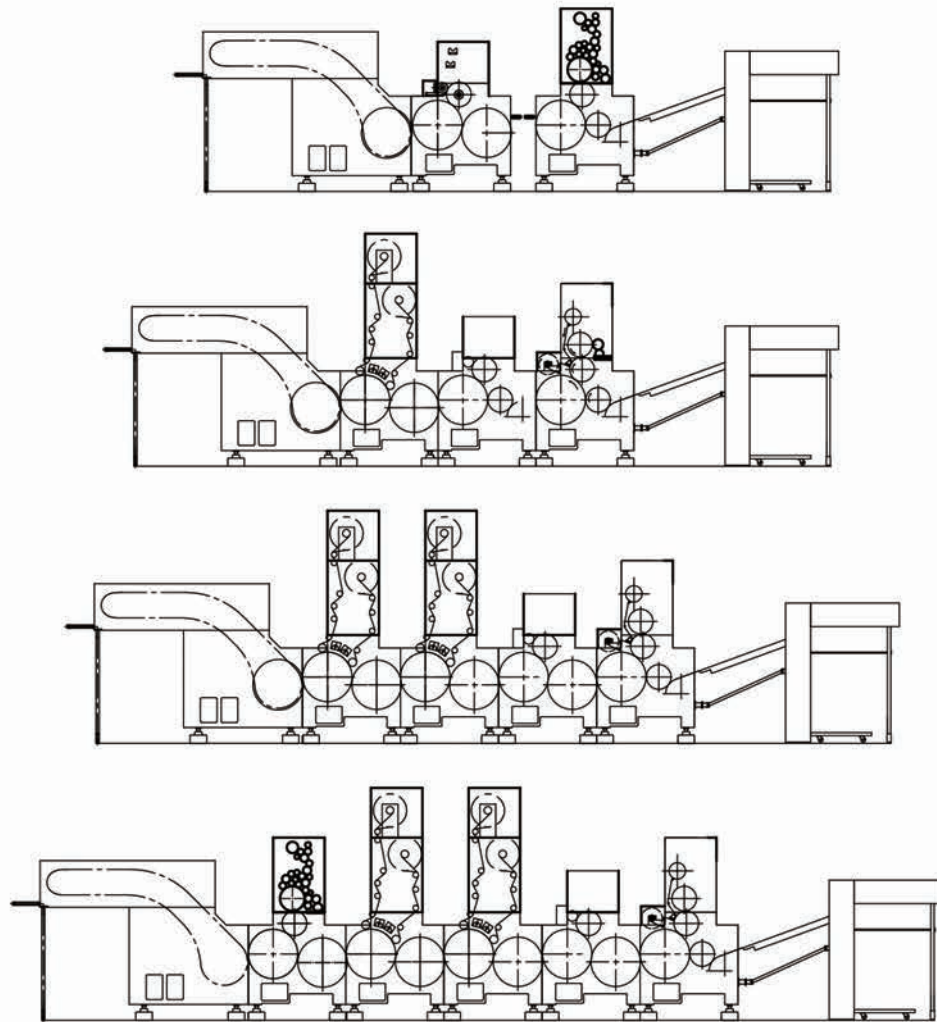
双通版-透镜 横光柱  
Double holographic with  
Horizontal light beam



动感双效闪烁全息  
Dynamic double effect  
holographic

# Sustainable Processing Platform

## 模组式后道加工平台



最大纸张	1040x720mm	Max.sheet size	1040x720mm
最小印张	520x360mm	Min.sheet size	520x360mm
纸张厚度	60-450g/m2	Paper thickness	60-450g/m2
最大上光面积	1020x710mm	Max coating area	1020x710mm
最高速度	10000张/小时	Max.speed	10000 sheets/h
总功率	200KW	Total power	200KW
总重量	27T	total weight	27T
输纸高度	1060 mm	Feed height	1060 mm
收纸高度:	910 mm	Delivery height	910 mm
外形尺寸	10700x3600x3630 (4组)	Machine dimension	10700x3600x3630(4 sets)

设计内容归海铨精工机械有限公司所有，如有技术上更改恕不另行通知。  
All rights belong to HAIHUA company, Technical changes will without notice.

今彩印刷 策划印刷 0373-2813898



新乡市海铨精工机械有限公司

地址:河南省新乡市高新区午阳路509号

电话: 0373-5871896

传真: 0373-5871896

手机: 13839068233

邮箱: hhm8081@163.com

www.hhmtech.com

XINXIANG HAIHUA PRECISION MACHINERY CO.,LTD

Add: 509 Wuyang Road, High tech Zone, Xinxiang City,  
Henan Province, China

Tel: +86 373-5802109

Fax: +86 373-5802109

Mobile : +86 13839068233

Emial: hhm8081@163.com

www.hhmtech.com

